



SPECIFICATIONS

MODEL D181 & D210

UNDERMOUNT TYPE

GENERAL

Fine quality sink bowl formed of 18 gauge
Type 304 18/10 nickel bearing stainless steel

DESIGN FEATURES

Bowl Depth: 6"

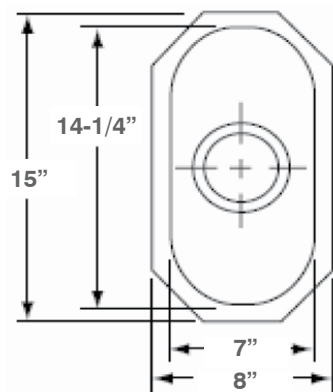
Finish: European Finish

Underside: Sound absorbing pads and
special paint applied to dampen sound

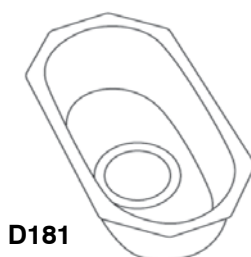
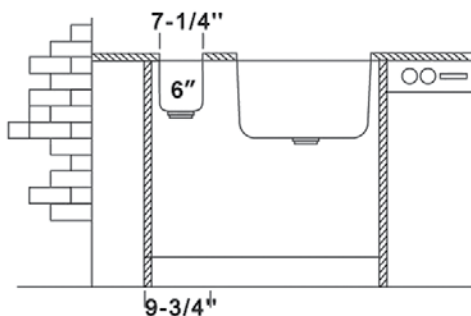
Drain Opening: 3-1/2"

Sinks include all basket strainers, mounting
hardware and template.

SINK DIMENSIONS (INCHES)



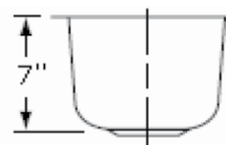
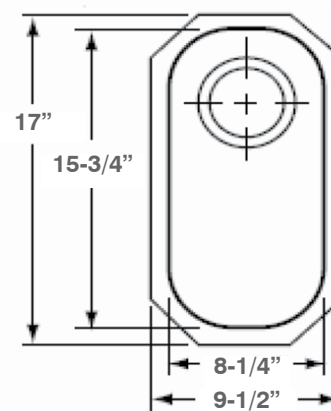
Minimum Cabinet Size	10"
Ship Weight	5 Lbs.



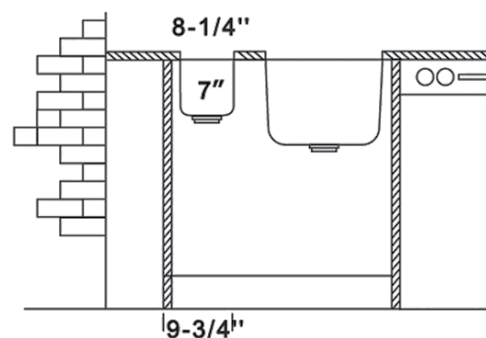
D181



D210



Minimum Cabinet Size	10"
Ship Weight	6 Lbs.



Installer Notes: Ukinox always recommends that you give the sink to the granite fabricator. If you are going to use a cutting board, provide that to the fabricator as well. Please note that we do include a template with each sink, but there can always be a slight variation. In addition, many of our templates are perforated so you can tear off the perforation for cutting board applications.



*Template and countertop mounting
clips are packed with every sink

Ukinox reserves the right to change product specifications without notice.